

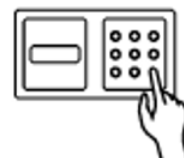
## GIOIA ROVERE

Armoured jewellery chest made of matt grey oak, a prestigious choice that combines the natural elegance of wood with a modern and sophisticated finish. The ruthenium accessories add a touch of discreet and sophisticated luxury, with a dark, metallic tone that harmoniously matches the grey oak structure. The cabinet is equipped with an internal safe painted matt grey, designed to provide maximum security and protection for jewellery and valuables, while maintaining a timelessly elegant aesthetic.

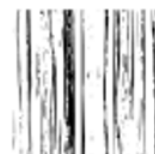
The internal drawers, dedicated to storing valuables, are upholstered in fine white leather. Each compartment is designed to offer maximum organisation, with spaces dedicated to rings, necklaces, watches and other accessories.

To further embellish the interior, soft red suede finishes create a striking colour contrast, offering a protective environment that prevents scratches or damage to the most delicate pieces.

Numeric opening



Matte grey oak



Ruthenium accessories



<i>Armoire measurements</i>	cm. 52x40x135
<i>Weight</i>	kg. 123
<i>Safe internal measurements</i>	cm.46x33,5x108

## TECHNICAL SPECIFICATIONS

